

Los Angeles Pacific Electric Railway Depot, circa 1910

1944

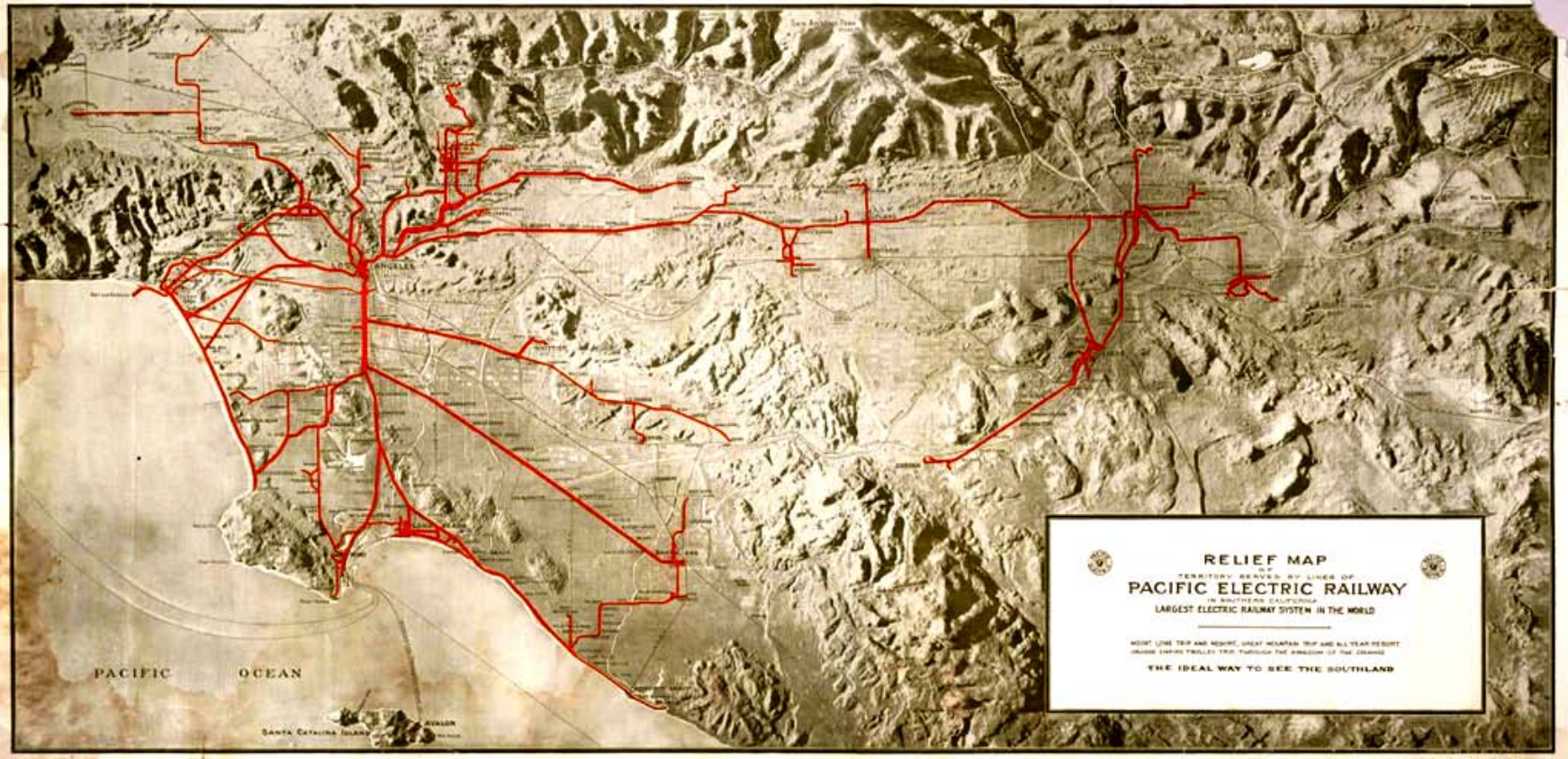
Electric Regional Rail Transit

Four Counties

1,150 Track Miles

900 Cars

109 Million Passengers



1948

Electric Transit Buses



Los Angeles Transit Lines - The Trolley Bus;
One of the final 30 delivered to Los Angeles in 1948

